



Y625013 Spacious Las Breñas Home With Two Units and Panoramic Ocean Views

€950,000

Ref: Y625013

Las Brenas

KPG Property proudly introduces this remarkable detached villa, positioned on an elevated 2,000 m2 plot in one of the most desirable locations in Las Breñas. The home enjoys extraordinary, wide-reaching views over the Atlantic Ocean, the Timanfaya volcanic landscape, Montaña Roja and Playa Blanca. The property is currently configured as two independent units measuring approximately 95 m2 and 67 m2. This distribution offers exceptional flexibility: the units can remain separate, be reconnected into a single home, or adapted to suit a rental or multi-generational living project. A standout feature is the large 60 m2 covere...

Telephone: +34 928 930970

Email: sales@kpgproperty.com

C/VARADERO 22, CC YAIZA, LOCAL 7, PLAYA BLANCA 35580 , LANZAROTE



Gallery



Property Details

Location: Las Brenas

KPG Property proudly introduces this remarkable detached villa, positioned on an elevated 2,000 m² plot in one of the most desirable locations in Las Breñas. The home enjoys extraordinary, wide-reaching views over the Atlantic Ocean, the Timanfaya volcanic landscape, Montaña Roja and Playa Blanca. The property is currently configured as two independent units measuring approximately 95 m² and 67 m². This distribution offers exceptional flexibility: the units can remain separate, be reconnected into a single home, or adapted to suit a rental or multi-generational living project. A standout feature is the large 60 m² covered garage. With its generous space and existing storage rooms, this area can be transformed into a completely independent living unit - ideal for guests, extended family or additional rental income. The main residence includes two double bedrooms, both enjoying sea views, two bathrooms, an open-plan kitchen with dining area and a character-filled lounge with skylights and a natural stone fireplace. Direct access to the garage adds convenience. Wooden accents and traditional Canarian features give this space a warm, rustic charm. The second living unit, originally used for holiday rentals, comprises an open-plan living-kitchen-dining space with sea views, a bedroom, a bathroom and an additional room currently used as an office. This space can easily function as a small single bedroom, allowing the unit to become a comfortable two-bedroom apartment. From the living area, doors open onto a west-facing terrace with a built-in barbecue and breathtaking sunset views. Sheltered by a volcanic stone wall with glass elements, it is a usable outdoor space all year round. The expansive plot includes a large front patio, several terraces, peaceful sitting areas and small auxiliary buildings once used for agricultural purposes. The surrounding landscape offers tranquillity, privacy and scenery unique to the south of Lanzarote. With its versatility, stunning vistas and potential for multiple living or rental setups, this property is an exceptional opportunity — perfect for families, those seeking a peaceful retreat or buyers looking for a home with strong rental potential in one of the most attractive villages on the island.

Property Features

- Sea Views
- South facing terrace
- Al fresco dining area
- BBQ
- Ground floor access
- Wide doorways
- Wheelchair friendly
- Double Garage
- Driveway
- Gated Parking
- Mountain Views
- Separate guest apartment
- Bath Tub
- Fireplace
- Fully fitted kitchen

- Furnished subject to Inventory
- Front Garden
- Private Garden

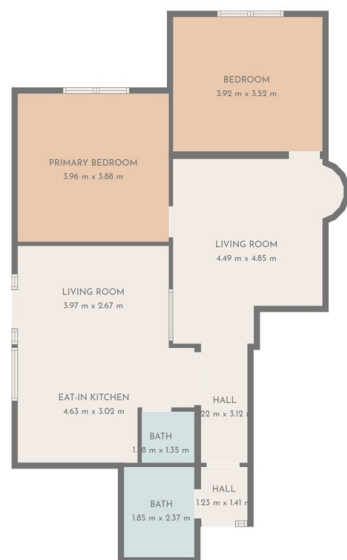
Telephone: +34 928 930970

Email: sales@kpgproperty.com

C/VARADERO 22, CC YAIZA, LOCAL 7, PLAYA BLANCA 35580 , LANZAROTE

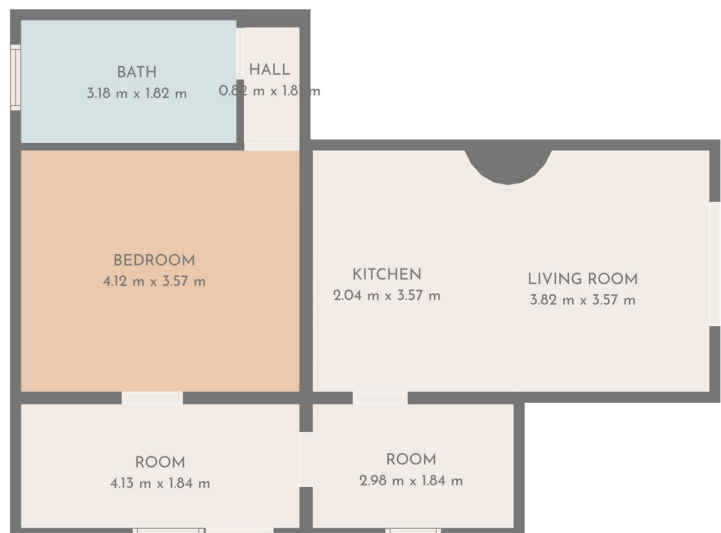


FloorPlans



TOTAL: 85 m2
1st floor: 85 m2
EXCLUDED AREAS: WALLS: 7 m2

FLOOR PLAN CREATED BY CURBICA APP. MEASUREMENTS DEEMED HIGHLY RELIABLE BUT NOT GUARANTEED.



TOTAL: 59 m2
1st floor: 59 m2
EXCLUDED AREAS: WALLS: 5 m2

FLOOR PLAN CREATED BY CURBICA APP. MEASUREMENTS DEEMED HIGHLY RELIABLE BUT NOT GUARANTEED.

