



## **N426001 Prime 740 m<sup>2</sup> Plot with Project & License – Puerto Calero**

# **€295,000**

**Ref: N426001**

### **Puerto Calero**

An exceptional opportunity to secure a 740 m<sup>2</sup> plot in the prestigious resort of Puerto Calero, complete with architectural project and building license already in place. The approved project envisions a contemporary single-level villa featuring: 3 spacious bedrooms, each with its own en-suite bathroom A bright, open-plan living and kitchen area Expansive outdoor entertaining space with an infinity pool overlooking the surroundings This is a rare chance to create a bespoke villa in one of Lanzarote's most sought-after marinas, renowned for its luxury yachts, fine dining, and boutique shops. Full plans and fur...

**Telephone: +34 928 930970**

**Email: [sales@kpgproperty.com](mailto:sales@kpgproperty.com)**

**C/VARADERO 22, CC YAIZA, LOCAL 7, PLAYA BLANCA 35580 , LANZAROTE**



# Gallery



Telephone: +34 928 930970

Email: [sales@kpgproperty.com](mailto:sales@kpgproperty.com)

C/VARADERO 22, CC YAIZA, LOCAL 7, PLAYA BLANCA 35580 , LANZAROTE



# Property Details

**Location:** Puerto Calero

An exceptional opportunity to secure a 740 m<sup>2</sup> plot in the prestigious resort of Puerto Calero, complete with architectural project and building license already in place. The approved project envisions a contemporary single-level villa featuring: 3 spacious bedrooms, each with its own en-suite bathroom A bright, open-plan living and kitchen area Expansive outdoor entertaining space with an infinity pool overlooking the surroundings This is a rare chance to create a bespoke villa in one of Lanzarote's most sought-after marinas, renowned for its luxury yachts, fine dining, and boutique shops. Full plans and further information available on request. Contact us today to explore this unique opportunity.

---

## Property Features

- 

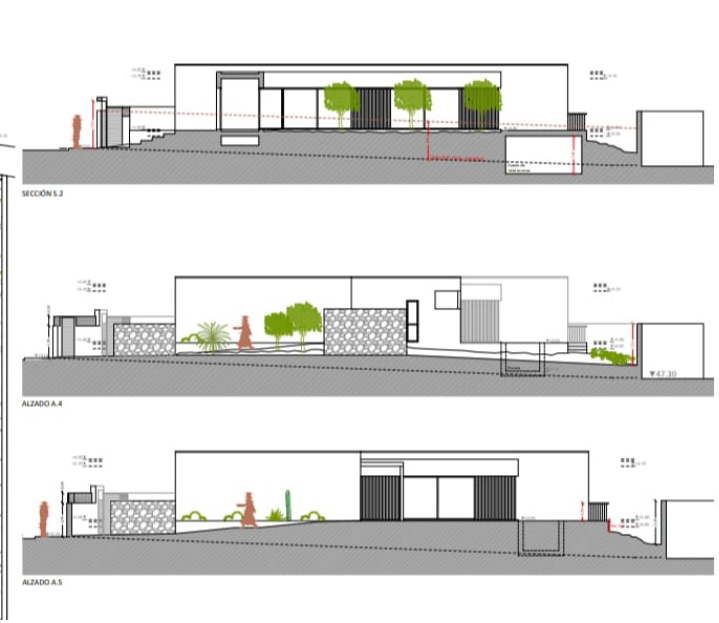
**Telephone:** +34 928 930970

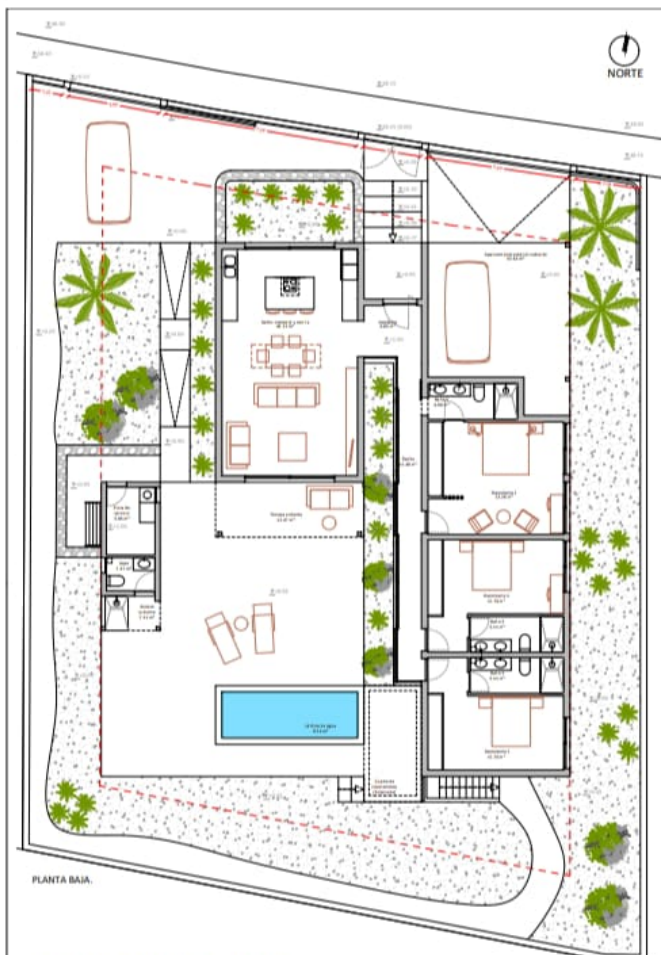
**Email:** [sales@kpgproperty.com](mailto:sales@kpgproperty.com)

C/VARADERO 22, CC YAIZA, LOCAL 7, PLAYA BLANCA 35580 , LANZAROTE



# FloorPlans





PLANTA BAJA.

CONSTRUCCIONES AUXILIARES Y TÉCNICAS DE LA VIVIENDA.

